

SPECIAL KIDS GAZETTE

2020 SUMMER CAMP EDITION

Inside: Information about Day & Overnight Camps for Kids with Special Needs, Pre College Programs, Websites & Contact Numbers for Additional Camp Listings and Funding Ideas.



Hunterdon Healthcare

Your full circle of care.

Child Development Center
Special Child Health Services
190 Route 31, Suite 500
Flemington NJ 08822

Susan Freedman, MSW, LCSW
Editor, SCHS Case Manager
sfreedman@hhsnj.org
(908)788-6399

Hunterdon County Special Child Health Services is funded by the Hunterdon County Board of Chosen Freeholders and the Special Child Health Services Program of the New Jersey Department of Health in cooperation with Hunterdon Healthcare's Child Development Center

ADDRESS CORRECTION REQUESTED

www.hunterdonhealthcare.org



The Child Development Center

**A Newsletter produced by Hunterdon County Special Child Health & Early Intervention Services
For Hunterdon County's 0-21 Special Needs Community**

SPECIAL KIDS GAZETTE

2020 SUMMER CAMP EDITION

Pages 2	Finding the right Camp and Paying for It
Pages 3- 4	Summer Programs for Kids with Special Needs in Hunterdon County Area
Pages 4 - 14	More Camps for Kids with Special Needs
Page 13	Finding Pre College Summer Programs & Therapeutic Summer Programs
Page 15	Index of Camps
Page 16	More places to find Camps

If you are not sure about sending your child to summer camp or have questions about what to ask, what to pack or how to prepare your child and your family, then go to:



National Center on Health, Physical Activity, and Disability (www.nchpad.org, Select Articles then Fun and Leisure, then Camp Resources then Next Page.) Discover Camp is a good resource for parents of children with disabilities who are selecting a camp for their child for the first time. Articles include a “checklist” of questions to ask admissions staff and insight from other parents.



Kids Health (www.kidshealth.org, Type ‘camp’ in the search box. You will find the following article: *Camps for Kids With Special Needs* which includes topics such as: *Questions to Ask* and *What are the Benefits of Camp*. Also in Spanish.

TIPS FOR FINDING THE RIGHT CAMP AND FINDING A WAY TO PAY FOR IT...

Many of the resources you will use to find the right camp are also connected to resources that provide financial help. Many camps also provide their own financial aid. If you need help paying for summer camp, ask the camp admission staff if they know of any programs that provide funding for *camperships* or money for camp.

PerformCare NJ

or NJ State Funding for Summer Camps for Kids with Developmental Disabilities:

In many cases PerformCare has the ability to provide funding for summer camp for kids who are registered with them as having a developmental or intellectual disability. In some circumstances PerformCare may also fund one to one aides. Funding limits and restrictions apply.

For more information go to

PerformCareNJ.org
or call 1-877-652-7624

If your child has a specific diagnosis such as Spina Bifida, Leukemia, Cystic Fibrosis, Asthma or Diabetes ask your specialist’s nurse or social worker, or the local or national chapter of your support organization about funding.

Try 211, or your county helpline,
Hunterdon Helpline: 908-735-4357 /
1-800-272-4630.

Ask your child’s child study team Case Manager or Guidance Counselor, they may be aware of summer programs and funding resources.

You can also call your child’s Special Child Health Services (SCHS) Case Manager. SCHS Case Managers may be able to help find funding for camp.

SCHS Hunterdon County call (908) 788-6399 or

email sfreedman@hhsnj.org

SCHS Somerset County (908) 725-2366

SCHS Mercer County (609) 588-8460

SCHS Middlesex County (732) 745-3100

SCHS Warren County (908) 475-7960 x7035

Other Counties call (609) 777-7778

Another great place to contact is The Arc.

Each Arc has a family support unit that may be aware of local resources. Most have their own summer programs.

Try contacting the Arc of New Jersey’s Family Institute www.arcnj.org (732) 828-2022 or (732) 246-2526

They will also give you the number for your local Arc.

The Arc of Hunterdon County www.archunterdon.org (908) 730-7827

The Arc of Somerset County www.thearcofsomerset.org (908) 725-8544

The Arc of Middlesex County www.arc-Middlesex.org (732) 247-8155

The Arc of Warren County www.arcwarren.org (908) 689-7525

The Arc of Mercer County www.arcmercer.org (609) 393-2483

A new place to call is your local **Family Success Center** (for those counties not listed below go to www.state.nj.us/dcf/families/support/success/)

Hunterdon County 908-237-0465, website hcfsc.com

Somerset County 908-722-4400

Warren County 908-213-2674

Mercer- South Ward 609-695-6275, North Ward 609-393-2980

Please Note: Resources and organizations named in this newsletter are provided for your research purposes only. Information about resources and organizations is taken directly from descriptions offered by them. Special Child Health Services, Hunterdon Medical Center or Hunterdon Healthcare are not liable for any conflicts arising from your use of these resources.

SUMMER PROGRAMS IN OR CLOSE TO HUNTERDON COUNTY

The presence of a camp on this list in no way implies a recommendation or endorsement. The list is meant for informational purposes only. At the time of printing many camps did not have updated information for Summer 2020. Always confirm information directly with the camp.



THE ARC OF SOMERSET COUNTY CAMP JOTONI www.thearcofsomerset.org

Last year's information: A day & overnight camp for children and adults with intellectual and developmental disabilities. Runs until Friday before Labor Day. Before and after care is available for an extra fee. RN or LPN staffs infirmary. Offers day and residential programs as well as a session that runs from 1pm-5pm for campers in extended school programs. Jotoni facilities include a swimming pool, dining hall and five cabins for residential camp. Transportation may be available for some sessions.

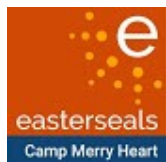
Contact: 908-725-8544 or 908-725-7868, JoshB@TheArcofSomerset.org 51 Old Stirling Road, Warren, NJ.



THE ARC OF WARREN COUNTY

CAMP WARREN RECREATION SUMMER PROGRAM

www.arcwarren.org 908-689-7525 x209 2019 information: Camp Warren Day Camp is for ages 5 and up. It operates from the end of June through mid August. Camp features a low camper to staff ratio of 3 to 1. Campers are grouped according to their age and are involved in daily activities which include swimming, music, sports, nature lore, arts and crafts. Transportation provided free of charge within Warren County. Financial aid may be available. mgubich@arcwarren.org.



EASTER SEALS CAMP MERRY HEART RESPITE

www.easterseals.com/nj/ Camp Merry Heart Respite Youth Program is for those ages 6-21. Three overnight sessions in August. Camp Merry Heart Respite also offers a variety of camp and travel programs for ages 18+ as well as a Foster Care and Sibling Reunification. Camp Merry Heart is located in Warren County, NJ. 908-852-3896, camp@nj.easterseals.com.



Hunterdon Equine Assisted
Recreation and Therapy

RIDING WITH HEART

www.ridingwithheart.org Pittstown, 908-735-5912

Offers week-long summer horseback riding camps, Monday through Friday in July and August. Before and after care may be available. This camp is open to kids with and without special needs. Campers have the opportunity to be involved in the total horse experience. Camp activities include riding lessons, the art and science of good horsemanship, grooming horses, arts and crafts, group activities, and time to play with fellow campers. This year's summer programs include: Inclusive Horseback Riding Camp For campers of ALL abilities which brings together children ages 5-16 with and without disabilities, Pony Tales, a literary based horse camp for struggling early readers, Camp 'NEIGH'bor inclusive camp and Super Siblings Camp for sibs of kids with special needs. Social Skills Camp.



unbridled possibilities
For Children and Adults
with Special Needs

MANE STREAM SUMMER DAY CAMP www.manestreamnj.org (formerly Somerset Hills Handicapped Riding Center)

An inclusive summer day camp for children of ALL abilities where activities are tailored to each camper's individual needs (ages 4 and up). This camp provides an excellent introduction to horses and riding in a safe and secure environment. All campers are paired with trained volunteers. Activities include: daily riding lessons, horsemanship, games, crafts, and more. 83 Old Turnpike Rd, Oldwick, NJ 08858. May be eligible for PerformCare or DDD funding. Contact: Holland Kuchanski, phone: 908-439-9636 x206, email: holland@manestreamnj.org.

SUMMER PROGRAMS IN OR CLOSE TO HUNTERDON COUNTY



THE HUNTERDON COUNTY PARKS DEPARTMENT 908-782-1158
www.co.hunterdon.nj.us Click on Parks & Recreation. Variety of day camps and programs.

THE SOMERSET HILLS YMCA www.somersetcountymca.org

On website click “Childcare & Camp” then “Somerset Hills YMCA Day Camp” Scroll down to “Special Needs Camp Options.” They offer two programs, an inclusion program and Carousel Kids. Contact by March 1st to request a shadow.



TO FIND ADDITIONAL CAMPS RUN BY YMCAS go to www.ymca.net scroll over About Us and click on “find a Y Resident/Overnight camp”, then select a state. Also see MAC Camp Program which works with Frost Valley YMCA.



SSBJCC CAMP RUACH CHAVERIM www.ssbjcc.org

(SHIMON AND SARA BIRNBAUM JEWISH COMMUNITY CENTER) Click on “Camp” then “Camp Ruach” then hover over “Age Groups” then click on “Haverim-Special Needs Camp”. Ruach Chaverim is designed for campers ages 2 to 9th grade who have special needs. The program has a 1:1 staff to camper ratio, providing individualized tailored support. Intake process required. Bridgewater, NJ. 908-443-9026.

MORE CAMPS FOR KIDS WITH SPECIAL NEEDS

The presence of a camp on this list in no way implies a recommendation or endorsement, the list is meant for informational purposes only. Information about resources and organizations is taken directly from descriptions offered by them. At the time of printing, summer 2020 information was not available for many of the camps. Confirm all information directly with individual camps.



CAMP AKEELA campaakeela.com

Camp Akeela, “where quirky kids thrive” offers programs for grades 3-12, for kids who have completed 11th or 12th grade, as well as a family camp. Akeela is a small, nurturing community that supports bright and kind boys and girls who are struggling socially. Some campers have an ASD or Asperger’s diagnosis while many others don’t have a formal diagnosis but do best in a more structured and predictable setting. Programs include overnight camp, family camp, life skills and college readiness. Thetford Center, VT and Lawrence University in Wisconsin. Contact: 866-680-4744.

ARTHUR C. LUF CHILDREN'S BURN CAMP www.ctburnsfoundation.org



The Arthur C. Luf Children's Burn Camp is the only one of its kind in the Northeast. All children attend free of charge. All expenses for lodging, meals, arts/crafts, activities and programs are paid for by the Foundation. Active and retired firefighters from fire Departments along the East Coast, medical personnel trained in treating burns and burn survivors round out the team of counselors for the children. Youth ages 8-18 from all over the world are welcome. Contact: 203-878-6744, email: cbcf@burnsfoundation.org.



CAROUSEL CONNECTIONS www.carouselconnections.com

A supportive summer residential environment that promotes further development of “transition-related” skills and independence. Teenagers and young adults with special needs

(Continued on page 5)

(Continued from page 4)

are provided opportunities to learn, maintain, and improve skills through participation in independent living, vocational training, and recreational activities, as they are immersed in a functional living and learning environment. Programs include: Independent Living Experiences, Community Building and Employment Opportunities and Thinking Ahead Planning. Contact: (215) 948-2527. Located in Philadelphia, PA.



**Arthritis
Foundation®**

CAMP CHAT www.arthritis.org

The Arthritis Foundation offers the opportunity for children with Juvenile Arthritis and other Rheumatic Diseases to get away from their day to day routines and escape to camp for fun and relaxation. Ages 8 to 16. August 2-7, 2020. Oakhurst, NJ.
Contact: Peggy Lotkowitz, mlozkowitz@arthritis.org, 732-366-1882.



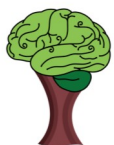
CAMP CHATTERBOX

Information from 2019: Camp Chatterbox is a therapy camp for nonspeaking or severely speech-impaired children, ages 5-22 (and their families), who use synthesized Augmentative and Alternative Communication (AAC) devices. Sponsored by Children's Specialized Hospital in Mountainside, NJ. Camp Chatterbox gives children an opportunity to interact with other children using AAC systems while learning to use their devices in functional activities.
Contact Sara Barnhill, campchatterbox@childrens-specialized.org, 908-301-5548.



CHILDREN'S SPECIALIZED HOSPITAL

www.childrens-specialized.org (look under *Programs and Services* then *Specialty Programs* then *Activity Connection*) Camps include: Pal's Paradise Day Camp, and BECOME Program, a three week Constraint Induced Movement Therapy (CIT) camp.
1-888-CHILDREN x5736, Caitlyn Foelsch, cfoelsch@childrens-specialized.org.



CAMP CRANIUM
EMPOWERING CHILDREN WITH BRAIN INJURY

CAMP CRANIUM campcranium.org

A week long overnight camp experience for children who have been diagnosed with an Acquired Brain Injury/Traumatic Brain Injury from ages 6-18 years old. Camp Cranium is held at Camp Victory, which is a completely handicap accessible recreational facility. Children are matched 1:1 with a counselor for the week of camp. They stay in air conditioned cabins. Every year Camp Cranium plans a week full of fun and activities. Children get to experience climbing a rock wall, going down a zip line, swimming in the pool, participating in a dance night, roasting marshmallows by the fire while singing camp songs, fishing in the pond, and paddling in the boats. They also participate in themed based activities. All activities are adaptable to all abilities. Also offers a winter ski retreat. Fee for week is \$250, campsships available. Millville, PA.
Contact Lexi Campbell (610) 246-2127 or campcranium@gmail.com.



THE DOUBLE H RANCH www.doublehbranch.org

Provides specialized programs and year-round support for children and their families dealing with life-threatening illnesses. Double H Ranch offers 8 residential sessions. Campers are children, age 6-16 during regular session and ages 17-21 during the alumni session. Some sessions are open to siblings. Camper to staff ratio is 2:1. The camp gives children dealing with critical or life-threatening illnesses the chance to experience the magic of the Adirondacks. The Double H Ranch provides camp experiences that are medically sound, memorable, exciting, fun and empowering. The fully equipped medical facility is staffed 24 hours a day by onsite doctors and nurses. Medical facility allows the camp to provide a

(Continued on page 6)

(Continued from page 5)

physically safe camp experience for all children. **CAMP INSPIRATION** In the beginning of June, Double H Ranch hosts Camp Inspiration a week long family program for children (ages 5-21 years old) who are BIPAP or ventilator dependent. Camp Inspiration allows campers to participate in typical summer camp activities including swimming, High Ropes, Arts and Crafts, a horse drawn carriage ride and the chance to participate in a camp dance, talent show and campfire. All programs are FREE. Offers year round programs. Located in Lake Luzerne, NY. Phone 518-696-5676.



DRAGONFLY FOREST www.dragonflyforest.org

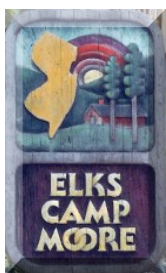
Provides children with special needs the opportunity to enjoy an overnight camp experience in an environment that is safe, equipped to meet a variety of physical, medical and psychological needs, nurturing, and filled with activities that allow each child to meet their "full fun." **Sessions offered: 22q11.2 Deletion, Autism, Persistent Asthma, Sickle Cell Disease and Hemophilia, Explorers Transition to Adult Life Program and Teen Leadership Program.** Apply for scholarships online. Dingmans Ferry, Pa 19460, Phone 570-828-2329 dragonflyforest@philyymca.org.

CAMP DUNNABECK AT THE KILDONAN SCHOOL www.kildonan.org



Camp Dunnabeck accepts average to above-average students ages 8-16 with dyslexia or a language-based learning difference. The camp's outdoor setting, informal atmosphere, and varied recreational program enables students to work hard without feeling that they are being deprived of a summer. Specifically, they concentrate on those activities that develop self-confidence and creativity since failure in school seems to inhibit creativity as well as erode confidence. Program runs from June 27 to July 31, 2020. Kent, CT.

Contact: campoffice@kildonan.org, phone 845-373-8111.



ELKS CAMP MOORE www.njelks.org

Information from 2018. Camp Moore is in Pompton Lakes, but the Elk Lodges in Hunterdon County sponsor local children every summer. The primary goal of Elks Camp Moore is to further develop the recreational and social skills of each child. In a relaxed and accepting atmosphere, each camper experiences new adventures, lasting friendships and opportunities that promote independence and greater self-confidence. Ages 7 to 18 years (as well as young adult week 19-21), ratio of counselors to children is usually 2:1 or 1:1. Elks Camp Moore provides 700-800 camperships each summer.

Nurses on staff. Each child must be sponsored by their local Elks Lodge, with the full cost of attendance paid by the lodge. The children attend at no cost to their families. Parents should contact their nearest Elks Lodge and ask to speak to the Special Needs Children's Chairman. They will help obtain an application for your child. If you experience difficulty in contacting the nearest lodge contact the state office at: **732-326-1300, Clinton Elks 908-735-8531, Flemington Elks 908-782-8759.**



CAMP FATIMA OF NEW JERSEY www.campfatimanj.org

A place to meet friends, play games and spend time in the sun, regardless of the challenges disability. For over 50 years, Camp Fatima's Summer Camp has provided a special place for school age children, offering campers a chance to pick from one of the week-long sleep away sessions in August. There is no charge for campers to attend Camp Fatima. Each camper is assigned his or her own counselor who provides 24 hour a day individualized care with the help of a team of registered nurses, lifeguards, counselors, administrators, as well as kitchen, arts and crafts, and activities staff. Adult programs also offered. August 8-15 and August 15-22. Contact: camper.committee@campfatimanj.org.



GROWING GREEN esep.easterseals.com

Growing Green is a unique residential summer camp that blends occupational, educational and recreational experiences. Their goal is to teach campers with special needs green occupational skills and an appreciation of outdoor recreational experiences. The primary focus of Growing Green is to teach organic gardening and green landscaping to campers in a designed vegetable and herb garden. Additionally, campers will enjoy other traditional camp experiences with opportunities for inclusion. Campers will learn new skills while they build greater self-esteem, develop new friendships, and improve fitness and nutritional awareness. Also offers an optional career experience track. On site nurse. Ages 10 and up, Growing Green welcomes campers with a wide range of care needs, staffing ratio is 1:3, campers who use wheelchairs need to be able to help with transferring. Growing Green is located at the Pocono Environmental Education Center within the Delaware Water Gap National Recreation Area.

Contact: Emily Gonda, camp@esep.org, 610-289-0114 x227.



HAPPINESS IS CAMPING www.happinessiscamping.org

For Children who have or who have had cancer and their siblings, ages 6-16, also offers family programs. Camp requires that the child's personal physician determine the child is well enough to attend. The camp is free to all, supported by donations and volunteer staff members. The medical staff includes oncology doctors and nurses who provide medical supervision of the highest quality, with facilities for kids requiring chemotherapy, children at risk of bleeding and infection or with significant physical disabilities. Offers Family Camp, College Prep Camp and Summer Counselor Mentorship Program. See website for Summer 2020 dates. Contact: Happiness Is Camping, Attn: Rich Campbell, 62 Sunset Lake Road, Hardwick, NJ 07825. Phone: 908-362-6733 E-mail: rich@happinessiscamping.org.



CAMP HAPPY TIMES www.thevaleriefund.org

The Valerie Fund's Camp Happy Times, is a free one-week overnight camp experience for children ages 5-21 who have or have had cancer (regardless of where they were treated). Over 150 children summer attend each summer. Camp Happy Times is located at the two hundred acre Tyler Hill Camp in Wayne County, Pennsylvania. Tyler Hill is fully accredited by the American Camping Association and Camp Happy Times is a proud member of the International Children's Oncology Camping Association. Contact: The Valerie Fund; Phone: 973-761-0422.

HELEN L. DILLER VACATION HOME FOR BLIND CHILDREN



www.dillerblindhome.org A summer vacation retreat for blind and visually impaired children. Located in a residential community two blocks from the ocean, in Avalon, New Jersey. Sessions run June through August and accommodate twenty

children ages 7-15 for week-long summer vacations. While attending camp, campers enjoy a variety of activities including amusement park rides, swimming at the beach, and visiting the boardwalk. All campers participate regardless of the extent of their vision loss, while establishing relationships with other children who may have a similar visual impairment. Having a staff to child ratio of one-to-five, campers must be able to feed, clothe, and bathe themselves with limited assistance, as well as walk up and down stairs. There is no fee for attending this week long camp. In previous years they have had sibling sessions.

Phone (610) 329-6133, See website for application and more information.



THE HOLE IN THE WALL GANG CAMP

www.holeinthewallgang.org Summer program serves seriously ill children ages 7-15 with cancer, serious blood diseases (including sickle cell disease, hemophilia, thalassemia, aplastic anemia, etc.), hereditary and acquired immunodeficiency and metabolic diseases, some children with very rare diseases (e.g., primary pulmonary hypertension, FOP) are also included. Family weekend

(Continued on page 8)

(Continued from page 7)

programs include sickle cell, hemophilia, cancer, metabolic disease, serious blood diseases and immunodeficiencies. Offers a sibling program. All applications are reviewed by the medical team. Decisions are based on the child's inability to attend another camp, the severity of the child's medical problems, whether the child has been to Camp before and other factors. Offers year round programs. Camp located in Ashford, CT, Phone (203) 772-0522.



HOPE WITH HEART www.hopewithheart.com

A week long camp for children with moderate to severe heart conditions ages 7-17. Established as a summer camp experience, Hope With Heart provides year round support and friendships for its campers. The camp is unique because it accepts high-risk children. The camp has children with varied heart problems such as valve replacements, pacemakers and transplants. At Hope With Heart their philosophy and policy is simple - if a child has a serious heart problem she or he belongs at Hope With Heart. Summer Session. 2020 dates: Sunday, August 2nd - Saturday, August 8th. Due date for all COMPLETED applications is April 30, 2020. Contact: Joanne Geanoules hopewithheartcamp@gmail.com, phone 201-264-6260. Please go to website to download application and for further information.



CAMP HORIZONS horizonsct.org

Camp Horizons is for campers ages 8-80 (Masters Camp for ages 40+) who are mildly to moderately developmentally disabled and able to be supported fully and effectively within a 1:5 ratio; ambulatory and physically able to participate in an active camping program (the facility is not fully wheelchair accessible) and reasonably proficient in activities of daily living such as eating, toileting, bathing and shaving. No awake 3rd shift provided; campers must sleep through the night. *Campers attend three programs in the morning and four in the afternoon.* Evening activities provide opportunities for the entire camp to come together for entertainment such as campfires, dances, movies, field games and music. Contact: (860) 456-1032, Windham, CT.

CAMP HUNTINGTON www.camphuntington.com



Camp Huntington is a co-ed, residential program for children and young adults with special learning and developmental needs. Programs are based on a therapeutic programming model formulated from a combination of special education, psychology and behavior analysis. All professionally designed activities encompass the benefits of participation, recreation and independence. Programming includes social skills training & practical skills development. The highest level of care is enthusiastically provided by a staff of special education and therapy professionals. Staffing levels from 1:1, 1:2 and 1:3+. Three programs are offered for social and life skills development, providing different levels of independence/support. Autism and Asperger's Syndrome, Developmental Disabilities and Learning Disabilities/ADHD. Also offers winter programs. High Falls, NY. Contact: 1-855-707-2267.



NEW JERSEY CAMP JAYCEE www.campjaycee.org

An overnight camp for ages 18 and older. New Jersey Camp Jaycee is a collaborative effort between the New Jersey Jaycees and the Arc of New Jersey, with a mission of providing quality camping experiences to persons with developmental disabilities. The goals of Camp Jaycee are centered around developing social skills, improving self-esteem, increasing confidence, learning in a fun environment, developing physical fitness, and establishing meaningful relationships with new friends. The campsite is located in Effort, Pa., in the Pocono Mountains. Camp runs June-August and is best suited to campers who can move freely without restriction. Campers must be: able to self feed, on a regular diet, free of restrictive medical problems, free of serious behavioral problems, have physical stamina for active camp program and have independent toilet skills, 4:1 staff to camper ratio. Contact: (732) 737-8279.



CAMP LEE MAR www.leemar.com

Camp Lee Mar is a private residential camp for children and young adults ages 7–21 with mild to moderate learning and developmental challenges, including but not limited to: developmental disabilities, down syndrome, autism, learning disabilities, Williams Syndrome, Asperger Syndrome, ADD, Prader Willi, and ADHD. Curriculum incorporates a strong Academic and Speech program with traditional camp activities. A structured environment, individual attention and guidance are emphasized at all times. Staff to camper ratio 3:1. Contact: ari@leemar.com, winter phone: 215-658-1708, Lackawaxen, PA.



Seeing beyond disability.

MAC CAMP PROGRAM www.yai.org

(on website click on services then write *camp* in the search box, click on *MAC Mainstreaming at Camp*). Mainstreaming at Camp works in conjunction with Frost Valley YMCA. MAC campers are between the ages of 8-18. Campers are fully included in all summer camp activities with additional support as needed. Specially trained counselors provide caring guidance in MAC cabins at a ratio of one staff member for every three campers. Knowledgeable and supportive staff adapt the camp experience to your child's needs and abilities.

Contact: YAI Camping Services, (212)273-6298, email timothy.allan@yai.org.



CAMP MARCELLA www.campmarcella.org

2019 Information: Camp Marcella, NJ Camp for Blind Children, Inc., opened its doors in 1947. It has partnered with New Jersey State Commission for the Blind and Visually Impaired (CBVI) and the Lions clubs of NJ to provide an outstanding summer program which has brought campers and staff back year after year. Sessions offered: Challengers, Ages 13-18 for typically developing children who are Blind/Visually Impaired (BVI Session), Adult Camp for ages 18-35.

registration@CampMarcella.org. 973-627-1113. Rockaway, NJ.



MDA SUMMER CAMP mda.org

Muscular Dystrophy Association offers free summer camps at locations throughout the county. See website for list of camps, contact: ResourceCenter@mdausa.org, or contact your local MDA office. NJ MDA office 201-843-4452, email maywood@mdausa.org.



CAMP NEJEDA www.campnejeda.org

(for children with type 1 diabetes) Day and Overnight Camps The objectives of Camp Nejeda are to provide: an active and safe camping experience for children with diabetes and an opportunity for children to live among their peers and establish close relationships with others who have diabetes. A unique opportunity for diabetes education management skills. Camp Nejeda also

offers Summer Family Camp. Year round programs include: BFF Weekend for campers to bring siblings and best friends, Fall weekend programs, Diabetes Family Camp and more. Overnight camp ages 7-16, day camp ages 6-17. Multiple locations. Email: info@campnejeda.org, Phone (973) 383-2611.



NJ CENTER FOR TOURETTE SYNDROME www.njcts.org

NJCTS Family Retreat Weekend and Tim Howard Leadership Academy. **NJCTS Family Retreat Weekend** is held at YMCA Camp Bernie in Hunterdon County. The weekend allows children and their families to meet others with Tourette Syndrome (TS), learn more about their diagnosis, and engage with peer mentors in a fun, safe environment. Kids enjoy activities such

as: canoeing, swimming, wall climbing, arts & crafts. Parents join in many activities with their children but also connect with other parents and share their stories. Powerful workshops provide a safe place for both youth and parents to ask questions about TS and learn from peer mentors. The NJCTS Family Retreat Weekend is

(Continued on page 10)

(Continued from page 9)

popularly known as "the best weekend of the year" to the many families who attend looking for camaraderie, a relaxing getaway from the stress of everyday life, and a chance to learn more about TS. June 5-7, 2020. Contact **908-575-7350** or info@njcts.org. **Tim Howard Leadership Academy** The NJCTS Tim Howard Leadership Academy is a four-day program. Participants work, play, eat and sleep at Rutgers' Busch Campus in Piscataway and enjoy a wide range of activities such as: interacting with doctors, psychologists, and other experts in the field to learn more about Tourette Syndrome, being a part of large and small group discussions with other teens and young adults with TS, participating in a variety of recreational activities, creating a project that can be used for their own advocacy efforts and to help advocate for others and meeting successful young adults who serve as coaches, guiding participants through the weekend's events. August 6-9, 2020. Contact: admissions@njcts.org. To request an application go to the website: www.njcts.org/academy/application/ and complete form as directed.



CAMP NOVA Family Resource Network

Go to www.familyresourcenetwork.org and type "camp" in the search box.

Camp NOVA is a wonderful opportunity for children and young adults living with epilepsy and other developmental disabilities to enjoy summer camp. Camp NOVA, an overnight camp for young people ages 12 and up, provides an exciting and independent camping experience in an environment filled with fun experiences & memories that last a lifetime. Camp activities include acting, arts and crafts, boating, fishing, karate, swimming and yoga. 7 days, 6 nights. Located in Sussex County, NJ.

Contact: The Family Resource Network at 800-336-5843, lraro@familyresourcenetwork.org.



CAMP PALS www.palsprograms.org

PALS Programs provides a place for young adults with Down syndrome and their peers to have fun, grow as individuals, and build transformative friendships. Each camper is paired with a high school or college aged peer, with this peer, teens and young adults will make many new friends and enjoy many new experiences. Campers will grow more independent and increase their socialization. 2020 PALS summer camp programs: Baltimore, Boston, Chicago, Cleveland, Georgetown, Los Angeles, Maine, NJ, NY, NYC, North Carolina, Philadelphia, Poconos, San Francisco and Wildwood. Ages vary by venue from 12 and up. Contact via website.



PENNSYLVANIA LIONS BEACON LODGE CAMP

www.beaconlodge.com Summer camp for children and adults with special needs including blindness, deafness, and many other physical and mental challenges. Beacon Lodge is nestled in the natural woodlands along the Juniata River of Central Pennsylvania just two miles west of Newton Hamilton, near Mount Union. Co-ed-Overnight Camp. Multiple summer sessions meet needs of

many campers, offers Family Camp. See website for extensive listing of summer programs. Mount Union, PA. Contact: phone 814-542-2511, email: office@beaconlodge.org.



CAMP QUALITY NEW JERSEY www.campqualityusa.org/nj/

(Prior year information) Provides free camping experiences and year-round support programs for children with cancer. Campers must be: kids with cancer between the ages of 4-17, by start of summer camp (they can be at any stage of treatment or remission, regardless of physical limitations), and able to spend a week away from home or the hospital. Camp Quality New Jersey's programs are focused to care for the emotional needs of children with cancer and their families. Camp is held for one-week during the summer, with additional support programs continuing throughout the year such as reunions and family outings. Each camper is paired with an adult companion (18 years or older) who spends the entire week by his/her camper's side. The companion is the camper's friend, cheerleader, and mentor even beyond camp. Through year-round events such as holiday parties and family picnics, campers, companions and families come together to share and support one another. Sandystone, NJ. Contact: newjersey@campqualityusa.org, 732-845-1958.



CAMP RAMAPO ramapoforchildren.org

Camp Ramapo is a residential summer camp that serves children ages 6 to 16 who are affected by social, emotional, or learning challenges, including children affected by autism spectrum disorders. Every summer Camp Ramapo serves more than 500 children with special needs. Ramapo provides an opportunity for children with

a wide range of needs—from nonverbal elementary-age children to teens needing help building essential conflict resolution skills - to experience success. Summer Adventure (ages 6-16). Teen Leadership (ages 14-16). Introductory Week one week session. Rhinebeck, NY. Phone: 845-876-8403 or 212-754-4994.

STAFF ASSISTANT EXPERIENCE (SAE) CAMP RAMAPO TRANSITION-TO-INDEPENDENCE PROGRAM FOR YOUNG ADULTS AGES 18-25.

SAE is a residential transition-to-independence program for young adults with social, emotional, or learning challenges such as Asperger's/high-functioning autism/NVLD/PDD, or ADHD. The program offers participants an opportunity to practice vocational and life skills in a communal setting that includes typically developing coworkers and peer role models. SAE is a structured program which offers coaching on life skills (healthy eating habits, physical fitness, organization, time management, meal planning and preparation, budgeting, laundry, hygiene/grooming, housekeeping, etc.), need support and supervision to develop a social network and manage free time. SAE offers a summer program (mid-June-mid August) and a school year program, with most young adults participating for nine months to one year. Each Staff Assistant is matched with a mentor, job coaches, and a roommate who is a Ramapo staff member trained to meet their needs. Highly individualized program, off campus volunteering and enrollment in online or community college classes. Contact via website or 845.876.8403 or 212-754-7003.



Inspiring confidence and joy
in those with special needs

RISING TREETOPS AT OAKHURST risingtreetops.org

(formerly Camp Oakhurst) serves children and adults ages 8 and up who have physical and/or developmental disabilities. In past years description of campers welcomed included: disabilities that effect movement, coordination, and stamina, as well as autism spectrum disorders, and include Cerebral Palsy, Muscular Dystrophy, Spina Bifida, Post Polio, Osteogenesis Imperfecta, Traumatic Brain Injury and similar conditions. Children and adults attending summer camp

sessions must have a basic level of expressive communication and be able to reside in communal living environments with others. Individuals who use a wheelchair or who require assistance with activities of daily living are welcome. Most special diets can be accommodated. Full fee per session can be adjusted according to family size and income. Scholarships are available. For children who qualify for state-supported respite services, fees may be covered. For further information and to request an application contact 732-531-0215 or 212-533-4020. Email info@risingtreetops.org. See website to download application.

ROUND LAKE CAMP YMHA & YWHA roundlakecamp.org



ROUND LAKE CAMP
Exceptional Jewish Camping

An inclusion program for children ages 7-17 with a wide array of special needs. Round Lake campers are able to integrate into all mainstream activities based on their level of comfort and interest. Facilities and programming are shared with Camp Nah-Jee-Wah and Cedar Lake Camp. Programming specific to Round Lake campers is also provided for those who prefer it. Some campers choose to integrate all throughout the day, while other campers choose to join the mainstream programs for certain activities. Campers' schedules are individualized based on their needs and requests. All recreational, social and educational activities are designed to meet the goals and capabilities of each child. A chief motivation that informs the design of all programming is the mission to help campers improve their social skills. Provides comprehensive activities in sports, the arts and the sciences. Our campers benefit from the support of a high counselor to camper ratio. In particular, the campers have strong support during the unstructured parts of the day, for example, during meals, clean up, rest hour, and shower hour. Camp staff includes doctors, nurses, OT's, speech therapists and social workers, bar/bat mitzvah training and academic support are provided. Dedicated gluten free kitchen. Teen Milford, PA. Contact: Phone: 973-575-3333 x145, RLC@njycamps.org



CAMP SEQUOIA www.camp-sequoia.com Camp Sequoia is an overnight summer camp for boys ages 7-17 to experience social skills success in a dynamic and nurturing environment. Camp program helps campers develop their social thinking skills through a FUN active, traditional camp program. Camp Sequoia is designed for children and teenagers with ADHD and other similar diagnoses who do not need the level of support offered at special needs overnight camps, yet need a different experience than a traditional overnight camp can offer. Camper population also includes boys who present with social anxiety and learning differences which effect social skills development and those who may not have a formal diagnosis yet present with social learning needs. All campers present with average to above average cognitive ability. 2:5 staffing ratio. Located in Pennsburg, PA. Phone: 610-771-0111 or contact via website.



SUMMIT CAMP & TRAVEL www.summitcamp.com

Summit Camp offers 4 programs for youth ages 8 to 23. Summit campers may have any number of diagnoses, but they all share a difficulty making and maintaining age appropriate peer relationships. Clinical diagnoses may include Asperger syndrome, ADD/ADHD, verbal and non-verbal learning disabilities (NVLD), HFA (including PDD-NOS), speech and language issues, and sensory integration issues. Some of youth may also have issues related to gaps in executive function, Tourette's syndrome, and/or Bi-Polar disorder.

SUMMER CAMP: for youth that have social and emotional learning challenges any age from 8 years to 21 years. Sessions of any length from 1-9 weeks.

TEEN TRAVEL: Amazing adventures for teens struggling with social learning skills that are 15-23 years, program is well supported and intricately designed.

WEEKENDER SOCIAL TRIPS: Friday to Sunday school year trips for teens that are 13-21 who can benefit from a structured, yet exciting, weekend outing with peers.

THE CENTER PROGRAM AT SUMMIT We are happy to introduce a new program at Summit that is geared specifically toward participants 18 through 23 years of age whom are working on independent living skills: The CENTER at Summit. The CENTER program is a full time, 7 week residential program located in Honesdale, Pennsylvania. Participants in this program are working on skills important to the transition to early adulthood. Contact: info@summitcamp.com or 570-253-4381.



The Arc
Gloucester

CAMP SUN N FUN

www.thearcgloucester.org/portal/camp-sun-n-fun

Camp Sun 'N Fun was founded by The Arc Gloucester in 1962 to offer children and adults with developmental disabilities an opportunity to participate in and enjoy summer recreational activities. Camp is located on over 30 wooded acres and boasts a variety of amenities, including screened, wooded cabins, barrier-free bathrooms and showers, an Olympic-sized, barrier-free swimming pool, nature trail, and an on-site medical facility that is staffed 24 hours a day. Camp Sun 'N Fun provides opportunities to make new friends, develop independence and gain self-esteem. Campers enjoy nature appreciation, arts and crafts, sports and games, music and dance, themed parties and much more. Contact: info@thearcgloucester.org or 856-848-8648.

VARIETY CLUB CAMP & DEVELOPMENTAL CENTER www.varietyphila.org



For camp information click on *Programs* then *Summer Programs*. Variety's Overnight Camp program offers 8 sessions for children and young adults ages 7-21 with developmental and/or physical disabilities. Variety can provide this program for campers who need assistance with all levels of personal care, those who require a feeding tube and catheter care, and those who have seizure disorders and shunts.

Campers are grouped in cabins by gender and age and grouped in activity teams by age. Cabins and teams are staffed at 2:1-3:1 ratio, and 1:1 support is available for those who require extra assistance for success. Contact 610-584-4366 or via website.

SUMMER PRE-COLLEGE PROGRAMS FOR STUDENTS WITH DISABILITIES



www.heath.gwu.edu Each year, HEATH at the National Youth Transitions Center staff members compile a list of summer pre-college programs for students with disabilities for families and educators. All programs listed in the publication are designed for high school students, usually rising juniors and seniors, and high school graduates who are planning to attend college. Campus disability support providers report that students with disabilities who receive some preview of the college experience can manage the first year with

fewer adjustment problems than others. Pre-college programs are usually held on the campus in residence halls or as day training, leisure, and recreational activities, and typically include some computer training. To see most recent listing click on *Resources* then *Repository* then scroll down to on *Summer Pre-College Programs for Students with Disabilities*, at the time of this newsletter, the most recent listing is from 2014, if you are interested in a specific school or if there is a school close to where you live or work contact them directly. Website also has information about grants and scholarships for students with special needs continuing education after high school.



FOR INFORMATION ON NJ COLLEGE PROGRAMS FOR STUDENTS WITH INTELLECTUAL OR DEVELOPMENTAL DISABILITIES- GO TO THE ARC OF NJ FAMILY INSTITUTE
www.thearcfamilyinstitute.org

The Arc of NJ's Family Institute's website has a listing of college programs in NJ designed specifically for students with intellectual and developmental disabilities. They also have information on relevant scholarship.

In addition they offer student tours of the different college programs offered throughout the state. Go to: www.thearcfamilyinstitute.org + Special Campaigns + College Programs or College Tours. Contact 732-828-2022.

OTHER PROVIDERS THAT MAY HAVE SUMMER PROGRAMS. MANY EMPHASIZE SOCIAL SKILLS.

Behavior Therapy Associates
732-873-1212
www.behaviortherapyassociates.com
HI-STEP Summer Social Skills Program

Hop, Skip & a Jump 908-658-5931
www.hopskipandjumpintofun.com

Kid Therapy Kid Camp 908-879-7067
www.kidtherapynj.com

Kidz on the Move Pediatric Rehab Center
908-369-3669 www.kidzonthemove.org

Princeton Speech-Language & Learning Center
Variety of programs including Social Thinking
609-924-7080
www.psllcnj.com



CAMP VICTORY campvictory.org

Camp Victory works with “partner groups” that target specific health concerns, conducting a diversity of camps. Camp Victory was built for children who must live with chronic health problems, physical or mental disabilities, or the aftermath of catastrophic illness. Partner groups fund their own camps and set their own fees. No child is turned away for lack of ability to pay. Camp Victory welcomes inquiries from concerned groups interested in operating a camp at their facility. Phone: (570) 458-6530. Camp Victory is in Millville, PA. Listing/ Dates below are for 2020.



May 15-17 Camp Courage (Bereavement)
Susan Smith (570) 784-1723
bereavementcamps@geisinger.edu



July 18-24 Camp JRA (Arthritis)
(267) 238-9725
Lauren.Ruffalo@arthritis.org

May 23-24

CampEmerge III (Autism Family Camp)
www.campemerge.org
Jerry Stropnick (570) 275-8904
BTEI@aol.com



July 25-31

Camp Spifida (Spina Bifida)
www.spifida.org
Sasha Hovak (570) 437-3924
sashahovak@verizon.net spifida@msn.com



June 5-7

Camp Vision
Blind/Visually Impaired
Tracy Haas (570) 323-9401 x124
tracyh@ncsight.org

June 12-14 Camp Little People (LPA, Inc.)
(Dwarfism) Eric Knudsen (781) 400-1617
eric@harborcamps.org

July 31 - August 2

Camp Ability (Family Camp w/ Special Needs)
(570) 416-2704 campability@yahoo.com



August 2-7

Camp HERO (Deaf & Hard of Hearing)
David Alianello gocamphero@gmail.com

June 14-19

Camp Cranium for Children with TBI or stroke
campcranium.org
Lexi Campbell (610) 246-2127
campcranium@gmail.com



August 2-7

Camp ECHO (Heart Disease)
Dawn Bressler (570) 784-1290
Ruby1275@aol.com

June 20-26

Keystone Diabetic Kid Camp kdkc.org
Dave Synnamon thekdkc@gmail.com



August 15-21

Camp Discover (Skin Disorders)
Howard Pride (570) 271-8050
hpride@geisinger.edu

June 27 - July 3

PA Vent Camp, Contact: Mike Dettorre/Robin Kingston
(717) 531-5338 info@paventcamp.org

July 4-5

CampEmerge (Autism Family Camp)
campemerge.org BTEI@aol.com
Jerry Stropnick (570) 275-8904



September 5-6

CampEmerge II (Autism Family Camp)
campemerge.org
Jerry Stropnick (570) 275-8904
BTEI@aol.com



September 25-27

Camp Spifida Retreat (18+ years old)
Sasha Hovak (570) 437-3924 sashahovak@verizon.net



October 4-6 Camp Courage II (Bereavement)
Susan Smith (570) 784-1723
bereavementcamps@geisinger.edu



July 4-10 Camp Kydnie (Kidney Disease)
www.campkydnie.org
Devon Nordine (717) 418-9629
campkydnie@gmail.com



July 11-17 Camp Dost (Cancer)
<https://rmhdanville.org/camp-dost/>
Chris Lehman (570) 214-2889
clehman@rmhdanville.com

INDEX OF CAMPS BY NAME

Page #		Page #	
13	Pre college programs – where to find	14	JRA, Camp
14	Ability, Camp	14	Kydnie, Camp
4	Akeela, Camp	14	Little People, Camp
4	Arthur C. Luf Children's Burn Camp	9	Lee Mar, Camp & LIFE Transitions Program
4	Carousel, Camp	8	MAC Mainstreaming
5	CHAT, Camp	3	Mane Stream
5	Chatterbox, Camp	9	Marcella, Camp
5	Children's Specialized Hospital Camps	9	MDA Summer Camp
14	Courage, Camp	3	Merry Heart Respite, Camp Easter Seals
5 & 14	Cranium, Camp	6	Moore, Camp
14	Discover, Camp	9	Nejeda, Camp
6	Dragonfly Forest	9	NJ Ctr for Tourette Synd. Family Retreat Wkd
14	Dost, Camp	10	NOVA, Camp
5	Double H Ranch, The	11	Oakhurst, Camp - see Ring Treetops
6	Dunnabeck, Camp	14	PA Vent Camp
14	ECHO, Camp	10	PALS, Camp
6	Elks Camp Moore	10	Pennsylvania Lions Camp Beacon
14	Emerge, Camp	10	Quality, Camp
6	Fatima, Camp	11	Ramapo, Camp
7	Growing Green	3	Riding with HEART
7	Happiness is Camping	11	Rising Treetops at Oakhurst
7	Happy Times, Camp	11	Round Lake Camp
7	Helen L. Diller Vacation Home for Blind Children	12	Sequoia, Camp
14	HERO, Camp	4	Somerset Hills YMCA
7	Hole in the Wall, Camp	14	Spifida, Camp & Spifida Retreat
8	Hope with Heart, Camp	12	Summit Camp & Travel
8	Horizons, Camp - Sleep Away	12	Sun n' Fun
3	Hunterdon County Parks Dept.	3	Warren, Camp - Arc of Warren
8	Huntington, Camp	14	Victory, Camp
8	Jaycee, Camp	12	Variety Club Camp
4	JCC Camp Ruach Chaverim	14	Vision, Camp
3	Jotoni, Camp	4	YMCA Camps

THE LIST BELOW MAY HELP YOU FIND AN APPROPRIATE PROGRAM:

22q11.2 deletion/DiGeorge Syndrome- Dragonfly Forest
Arthritis, Camp JRA, Camp CHAT
Asthma - Dragonfly Forest, www.asthmacamps.org
Augmentative Communication- Camp Chatterbox
Autism, High Functioning / Asperger's – Multiple camps
Bereavement- Camp Courage (2 sessions)
Bleeding disorders – Dragonfly Forest, Hole in the Wall, Double H
Blind/Visually impaired- Hellen L. Diller Vacation Home, Camp Marcella, Pennsylvania Lions Beacon Lodge, Camp Vision
Brain Injury -Camp Cranium, Camp TREK (see back cover)
Burns- Arthur C. Luf Children's Burn Camp
Cancer - Happiness is Camping, Camp Happy Times, Camp Quality, The Hole in the Wall Gang, Camp Dost
Cerebral Palsy –Multiple camps
Constraint Induced Therapy - Children's Specialized Hosp.
Deaf/Hard of Hearing - Camp HERO
Diabetes – Camp Nejeda, Keystone Diabetic Kid Camp
Down syndrome - Camp PALS
Dyslexia – Camp Dunnabeck
Epilepsy -Camp NOVA

Heart conditions - Hope With Heart, Camp Echo
Immune disorders - The Hole in the Wall Gang Camp
Kidney disease - Camp Kydnie
Learning disability - Camp Dunnabeck, Camp Huntington
Little People -Camp Little People
Mainstream – YAI MAC Camp Program, Somerset Hills YMCA, Summit Camp & Travel
Medically fragile – Double H Ranch, Hole in the Wall Gang
Muscular dystrophy – MDA Summer Camp
Physical disabilities – Elks Camp Moore, Camp Fatima, Growing Green, Camp Oakhurst
Sickle Cell disease - Dragonfly Forest, Double H Ranch
Skin Disorders - Camp Discover
Spina Bifida - Camp Spifida, Camp Spifida Retreat
Tourette Syndrome - NJ Center for Tourette Syndrome Family Retreat and Tim Howard Leadership Academy
Transition to Adult Life Programs - Camp Akeela, Camp Carousel, Dragonfly Forest, Going Green, Camp Huntington, Summit Camp, Camp Ramapo, Variety Club
Ventilator/Oxygen Dependent - Camp Inspiration at Double H Ranch, PA Vent Camp

MORE PLACES TO FIND THE RIGHT SUMMER PROGRAM

If you don't have internet access, try your local library.
Ask for assistance at the reference desk or from the youth services librarian.

FEDERATION FOR CHILDREN WITH SPECIAL NEEDS <https://fcsn.org/camps/>
COMPREHENSIVE LIST OF CAMPS

CAMPS FOR CHILDREN WITH CANCER:
Children's Oncology Camping Association
www.cocai.org

CAMPS FOR KIDS & ADULTS W/ SPINA BIFIDA
(908) 782-7475 E-mail: info@thesbrn.org
www.thesbrn.org spinabifidaassociation.org
www.sbawp.org

CAMPS FOR CHILDREN WHO ARE DEAF OR HARD OF HEARING
gallaudet.edu and type *camp* in the search box
Deafcampsinc.org deafchildren.org

CAMPS FOR KIDS & ADULTS WITH BRAIN INJURY
1-800-669-4323 Brain Injury Alliance of NJ
bianj.org Email: info@bianj.org
Camp TREK for ages 18 +

CAMPS FOR AMPUTEES & CHILDREN WITH LIMB DIFFERENCES OR LOSS
www.amputee-coalition.org Paddy Rossbach Youth Camp
1-888-267-5669, camp@amputee-coalition.org
www.handstolove.org
www.adventureamputeecamp.org
www.adventurecampinc.org
www.nolimitsfoundation.org

CAMPS FOR KIDS WITH ADHD & LEARNING DISABILITIES
Understood.org type *Camp* in the search box
www.ldonline.org
www.chadd.org

CAMPS FOR KIDS WITH AUTISM
AUTISM NJ www.autismnj.org click on *Find a referral*
+ *Recreation + Camps* or call 1-800-4-Autism
or 609-588-8200

CAMPS FOR KIDS WITH CRANIOFACIAL DIFFERENCES
www.cleftline.org 1800-242-5338
www.ccakids.com

ASTHMA CAMPS www.asthmacamps.org

CHILDREN'S HEMIPLEGIA & STROKE ASSOCIATION (CHASA) www.chasa.org
click on *SPORTS* then on *Summer Camps*

CAMPS FOR CHILDREN WITH DIABETES
www.diabetescamps.org

CAMPS FOR KIDS WITH TOURETTE SYNDROME
NJ Center for Tourette Syndrome (908)-575-7350
njcts.org info@njcts.org

THERAPEUTIC RIDING www.pathintl.org
PATH Professional Association of Therapeutic
Horsemanship International, Click on *Centers*

GENERAL LISTINGS / SEARCH ENGINES SPECIFICALLY FOR KIDS WITH SPECIAL NEEDS:

FEDERATION FOR CHILDREN WITH SPECIAL NEEDS <https://fcsn.org/camps/>

CAMPS & PROGRAMS FOR PEOPLE W/ SPECIAL NEEDS www.veryspecialcamps.com

CAMPS FOR ADULTS www.grownupcamps.com

MAINSTREAM WEB SITES THAT ALLOW YOU TO SEARCH FOR CAMPS BY SPECIFIC SPECIAL NEEDS:

American Camp Association (ACA)
www.acacamps.org
National # 800-428-2267 or 765-342-8456.
www.mysummercamps.com
www.summercamps.com
www.kidscamps.com

From: **THE SPECIAL KIDS GAZETTE SUMMER CAMP EDITION 2020**
A Newsletter produced by Hunterdon County Special Child Health & Early Intervention Services
For Hunterdon County's 0-21 Special Needs Community
www.hunterdonhealthcare.org